



UNIVERSITY OF NEBRASKA AT OMAHA
SCHOOL OF MUSIC

THE TENTH ANNUAL BOCH FESTIVAL

Band, Orchestra, and Choir Honors Festival at the Holland Performing Arts Center
Friday, January 26th | Saturday, January 27th | Sunday, January 28th
Website | <http://music.unomaha.edu/boch>

Important Information for All Participating Students and Directors

DIRECTORS: Please check to make sure student and school names on posted personnel lists are correct. If they are incorrect on this list, please e-mail corrections so they will be correct on name badges and programs.

ATTENDANCE & REGISTRATION FEE: If you have been selected for the festival, it is imperative that you have a parent/guardian confirm your attendance by completing the BOCH Festival participant registration form available on the BOCH Festival website (music.unomaha.edu/BOCH). **Confirmation must be received no later than Dec. 19. If we have not received confirmation by that time, an alternate will be selected.**

New this year:

Online payment is now available! The fee to participate in this year's BOCH festival is \$45 and may be paid online at the BOCH Festival website (music.unomaha.edu/BOCH). Our preferred method of payment is online by credit/debit card and electronic check, but we will accept paper checks as we have in the past. Payment may be made on an individual level (students pay UNO directly) or on the school/district level. Directors needing a printed invoice may contact Dr. Joshua Kearney directly by email at jskearney@unomaha.edu.

If you wish to pay by paper check, checks must be made out to "UNO Music" and sent to **Dr. Joshua Kearney** at the following address: UNO BOCH Festival, c/o Dr. Joshua Kearney, School of Music, University of Nebraska at Omaha, 6001 Dodge St., Omaha, NE 68182. Please indicate the name of the student on the memo line of the check.

Payment Deadline: Jan. 12, 2018.

LOCATION: The BOCH Festival is held on the campus of UNO at the School of Music (Strauss Performing Arts Center)

BOCH FESTIVAL T-SHIRT: UNO is offering students the opportunity to pre-order BOCH Festival T-Shirts. We will have limited inventory available for purchase on Friday and Saturday at a cost of \$15 each. Students/families are encouraged to pre-order shirts by visiting the BOCH Festival website (music.unomaha.edu/BOCH) and paying electronically. However, we will be accepting paper checks like last year.

If you wish to pay for your shirt pre-order with a paper check, please mail the enclosed pre-order form and check made out to "UNO Music" to **Dr. Joshua Kearney** at the following address: UNO BOCH Festival, c/o Dr. Joshua Kearney, School of Music, University of Nebraska at Omaha, 6001 Dodge St., Omaha, NE 68182. Please indicate the name of the student on the memo line of the check. Pre-orders will be accepted through **January 5, 2018.**

EXPENSES: Other than the registration fee (see above) and some personal food costs there are no additional charges to participants for any of the BOCH Festival activities.

REFUNDS DUE TO INCLEMENT WEATHER: Unfortunately, we will not be able to offer refunds if the festival is cancelled due to inclement weather.

MUSIC:

- **Choir:** All choir music will be provided by UNO (schools/individuals do NOT need to purchase choir music this year). Music will not be sent out ahead of time. Pieces that are in the public domain will be available for download on the BOCH website by December 21.
- **Bands:** Other than audition excerpts (see below), no band music will be available ahead of time. All parts will be handed out at the first rehearsal on Friday, Jan. 26.
- **Orchestra:** Other than audition excerpts (see below), all orchestra music will be provided at the first rehearsal on Friday, Jan. 26. Any selected pieces that are in the public domain will be available for download to practice on the BOCH website by December 21.

PART AUDITIONS:

- **Wind Ensemble:** The following instruments will audition for principal and/or chair assignments at **3:00 PM on Friday, January 26, 2018**. Audition music will be available for download on the BOCH website beginning December 21. *All accepted flute students wishing to audition for piccolo parts should plan to audition during this timeslot (Wind Ensemble & Honor Band).*
 - Flute (and/or Piccolo), Oboe, Clarinet, Alto Sax, Horn, Trumpet, and Trombone.
- **Orchestra:** Select Students indicated by ****asterisks**** on the results sheet may audition for concertmaster and/or principal placements at **3:00 PM on Friday, January 26, 2018**. Audition music will be available for download on the BOCH website beginning December 21.

HOTEL: The official hotel for the 2018 Festival is the Staybridge Suites at 78th and Dodge. They have reserved blocks of rooms at a discounted rate (rooms starting at \$79). Their phone number is 402.933.8901.

MEALS: Dinner on Friday will be provided for all festival participants. A special dinner is planned for all participating directors on Friday evening. Lunch on Sunday will be provided at the Holland Center for all student participants.

DRESS: Comfortable school clothing is satisfactory for rehearsals.

All student performers will wear concert black at Sunday's Holland Center Performance. This is a significant change from previous years. Concert black is described as the following:

Option 1: Black suit, black/white shirt, black shoes, and black socks

Option 2: Black dress or pant suit, long-sleeved black/white shirt, black shoes, black socks (if needed)

PARKING AT UNO: On Friday students should either park on campus or be dropped off at the Strauss Performing Arts Center. Visitors may park in unreserved parking spaces in the West Parking Garage free of charge. There is 90-minute metered parking (coin only) available in Lot A (North of Kayser Hall) and in Lot M (south side of the Criss Library). Metered parking is very limited. Parking is free in most lots on Saturday. You may park in any lot except service, metered, or handicapped reserved spots without getting ticketed.

Busses should drop students off at the Strauss Performing Arts Center in the cutout on University Drive. Bus parking is in Lot 26 on the west side of Baxter Arena. The RED shuttle provides free transportation between the Dodge Campus and Lot 26.

PARKING AT THE HOLLAND CENTER: Please review the enclosed Holland Center information sheet for parking information.

INSTRUMENTS/EQUIPMENT: Participants should bring all equipment necessary including instruments, mutes, oils, rosin, water bottle, etc. **All instrumentalists must bring a music stand for rehearsals.** Stands will be provided for the performance. Equipment may remain in the rehearsal spaces during the course of the festival. *Equipment will be stored in a designated storage room during the Holland Center Performances. UNO is not responsible for lost or stolen items. Please leave valuables at home!*

PERCUSSION: We will furnish all large percussion instruments. Percussionists should bring a **MUSIC STAND**, mallets (keyboard and timpani), sticks, and, whenever possible, a triangle or tambourine.

RECORDINGS OF HONOR ENSEMBLES: Free audio recordings of all Honor Ensembles will be made available to students and directors for download by February 15th. A link to the recordings will be emailed to participants.

TICKETS: Tickets to the Final Performance at the Holland Center will cost \$15 each for general admission. Tickets may be purchased through Ticket Omaha or at the door. Ticket Omaha website: <http://www.TicketOmaha.com>. Handicap accessible tickets are available upon request through Ticket Omaha.

All Participating Honor Ensemble Students and all Directors may attend concerts at no charge with your name badge that will be provided to you at registration.

Contact Information

BOCH Honor Festival Coordinators

Dr. Joshua Kearney, jskearney@unomaha.edu
Director of Athletic Bands
402.554.3602

Dr. Derrick Fox, dafox@unomaha.edu
Director of Choirs
402.554.3350

BOCH Honor Band/Wind Ensemble Chair

Dr. Karen Fannin, kfannin@unomaha.edu
Director of Bands
402.554.3446

BOCH Honor Choir Chair

Dr. Derrick Fox, dafox@unomaha.edu
Director of Choirs
402.554.3350

BOCH Honor String Orchestra Chair

Prof. Aaron Breid, abreid@unomaha.edu
Interim Director of Orchestral Activities
402.554.3015



UNIVERSITY OF NEBRASKA AT OMAHA
SCHOOL OF MUSIC

THE TENTH ANNUAL BOCH FESTIVAL

Band, Orchestra, and Choir Honors Festival at the Holland Performing Arts Center
Friday, January 26th | Saturday, January 27th | Sunday, January 28th
<http://music.unomaha.edu/boch>

**STRAUSS PERFORMING ARTS CENTER (SPAC)
MILO BAIL STUDENT CENTER (MBSC)
COLLEGE OF PUBLIC AFFAIRS AND COMMUNITY SERVICE (CPACS)**

Friday, January 26, 2018

- 2:00 PM BOCH Registration opens in the Strauss Performing Arts Center Lobby
- 3:00 PM **Honor Band** – Rehearsals begin in the MBSC Ballroom until 5:30 PM.
Wind Ensemble – Chair Placement Auditions:
- | | | |
|--------------------------|-----------------------------------|---------------------|
| Flute/Piccolo – SPAC 225 | Clarinet – SPAC 248 | Alto Sax – SPAC 227 |
| Trumpet – SPAC 212 | Horn – SPAC 247 | Trombone – SPAC 226 |
| Oboe – SPAC 225 | Percussion Masterclass – SPAC 221 | |
- String Orchestra** – Principal String Auditions – SPAC 214
String Masterclasses:
- | | |
|----------------------------------|--------------------------------------|
| Violin – MBSC 308 (Gallery Room) | Viola – MBSC 228 (Chancellor's Room) |
| Cello – SPAC 239 | Bass – SPAC 131 |
- Choir** – Rehearsal begins in SPAC Recital Hall
- 4:00 PM **Wind Ensemble** – Rehearsal begins in SPAC 109
String Orchestra – Rehearsal begins in SPAC 105
- 4:30 PM **Choir** – Sectionals (Rooms TBD)
- 5:30 PM **Dinner** – Students are provided free dinner in the **MBSC Food Court**
Directors will have dinner in the **MBSC 302 (Dodge Room)**
- 6:30 PM UNO Faculty Showcase (International Concert Series) – SPAC Recital Hall
- 7:30 PM Ensemble Rehearsals
Honor Band – MBSC 207 (Ballroom)
Wind Ensemble – SPAC 109
String Orchestra – SPAC 105
Choir – SPAC Recital Hall
- 9:00 PM Conclusion for the night

Saturday, January 27, 2018

- 9:00 AM **Honor Band** – Rehearsal in MBSC Ballroom
Wind Ensemble – Rehearsal in SPAC 109
- String Orchestra** – Sectionals
- Violin – SPAC 105
Cello – SPAC 239
- Viola – MBSC 228 (Chancellor's Room)
Bass – SPAC 131
- Choir** – Rehearsal in SPAC Recital Hall until 11:30 AM
- 10:00 AM **Honor Band & Wind Ensemble** – Sectional and/or Masterclass
Brass and Percussion Sectionals
Honor Band – MBSC Ballroom
Wind Ensemble – SPAC 109
- All Woodwind Masterclass
- Flute – SPAC 131
Oboe/Bassoon – MBSC 228 (Chancellor's Room)
Saxophone – SPAC 239
- Clarinet – CPACS 132
- String Orchestra** – Rehearsal in SPAC 105 until 11:30 AM
- 10:45 AM **Honor Band & Wind Ensemble** – Sectional and/or Masterclass
Woodwind and Percussion Sectionals
Honor Band – MBSC Ballroom
Wind Ensemble – SPAC 109
- All Brass Masterclass
- Trumpet – CPACS 132
Trombone – MBSC 228 (Chancellor's Room)
- Horn – MBSC 222
Euphonium & Tuba – SPAC 239
- 11:30 AM Lunch on your own
- 1:00 PM Ensemble Rehearsals
Honor Band – MBSC Ballroom
Wind Ensemble – SPAC 109
String Orchestra – SPAC 105
Choir – SPAC Recital Hall
- 2:30 PM Break
- 3:00 PM UNO Ensembles Concert – SPAC Recital Hall
Featuring Concert Choir, Symphonic Wind Ensemble, and the Heartland Philharmonic Orchestra
- 4:00 PM Ensemble Rehearsals
Honor Band – MBSC Ballroom
Wind Ensemble – SPAC 109
String Orchestra – SPAC 105
Choir – SPAC Recital Hall
- 5:30 PM Conclusion for the night

Sunday, January 28, 2018

- 10:15 AM Call time for Wind Ensemble, String Orchestra, and Choir
- 10:30 AM Dress Rehearsal for Combined Final Number (All ensembles except Honor Band)
- 11:00 AM **Wind Ensemble** – Sound Check
Call Time for Honor Band
Lunch for String Orchestra and Honor Band (pizza and salad provided)
- 11:15 AM **Choir** – Sound Check
- 11:30 AM Lunch for Wind Ensemble and Choir (pizza and salad provided)
- 11:45 AM **String Orchestra** – Sound Check
- 12:00 PM **Honor Band** – Sound Check
- 12:30 PM Break
- 1:00 PM Audience Enters
- 1:30 PM Concert Starts
- 3:30 PM Concert Concludes (Estimate)



UNIVERSITY OF NEBRASKA AT OMAHA DODGE CAMPUS PARKING MAP

UPDATED 10/26/17



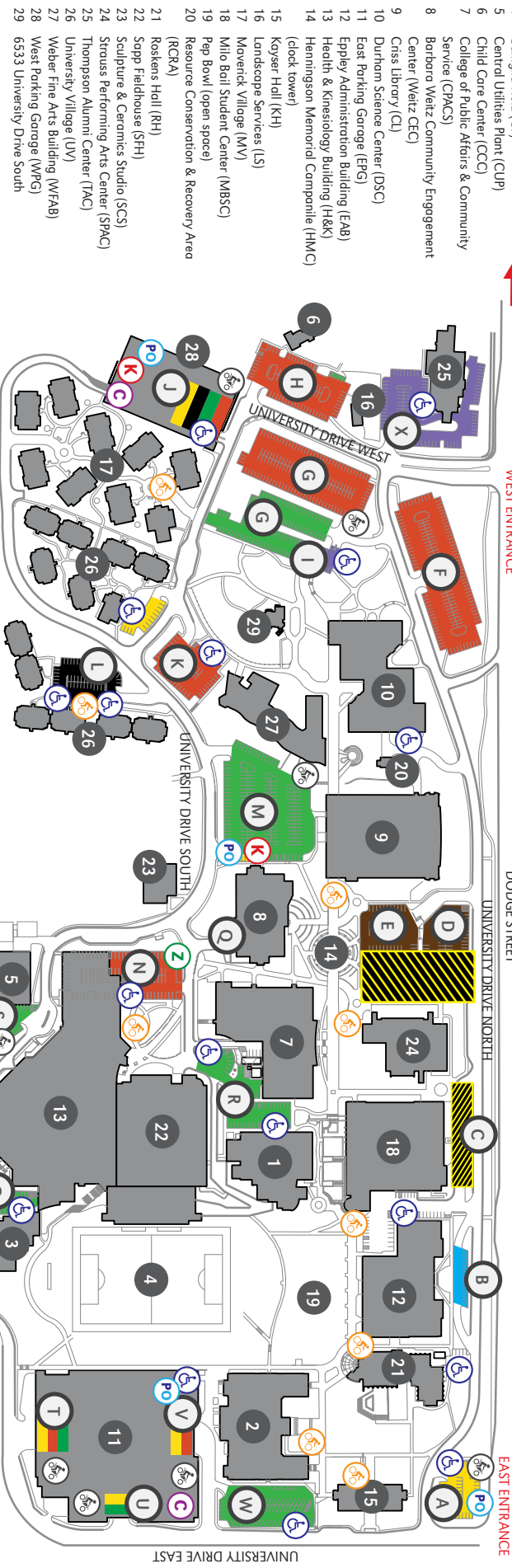
UNL, UNK, UNMC PARKING

Y First Christian Church (FCC)

Permits Required
Surface Lots: Monday, 7 A.M. to Friday, 5 P.M.
Garages: Monday, 7 A.M. to Thursday, 10 P.M.

UNL, UNK, UNMC PARKING

Z Saint Margaret Mary (SMM)



- 1 Alwine Hall (AH)
- 2 Arts & Sciences Hall (ASH)
- 3 Biomechanics Research Building (BRB)
- 4 Conglia Field (CF)
- 5 Central Utilities Plant (CUP)
- 6 Child Care Center (CCC)
- 7 College of Public Affairs & Community Service (CPACS)
- 8 Barbara Weitz Community Engagement Center (Weitz CEC)
- 9 Criss Library (CL)
- 10 Durham Science Center (DSC)
- 11 East Parking Garage (EPG)
- 12 Eppley Administration Building (EAB)
- 13 Health & Kinesiology Building (H&K)
- 14 Hennings Memorial Campanile (HMC) (clock tower)
- 15 Koyser Hall (KH)
- 16 Landscape Services (LS)
- 17 Moverick Village (MV)
- 18 Milo Bail Student Center (MBSC)
- 19 Pap Bowl (open space)
- 20 Resource Conservation & Recovery Area (RCRA)
- 21 Roskens Hall (RH)
- 22 Sapp Fieldhouse (SFH)
- 23 Sculpture & Ceramics Studio (SCS)
- 24 Struss Performing Arts Center (SPAC)
- 25 Thompson Alumni Center (TAC)
- 26 University Village (UV)
- 27 Weber Fine Arts Building (WFAB)
- 28 West Parking Garage (WPG)
- 29 6533 University Drive South

STUDENT

F/S/S SURFACE PERMITS

VISITOR

FACULTY

RESERVED

EVENT PARKING

CEC VISITOR

MV/UV RESIDENT

CLOSED LOTS

C CARPOOL

K KIOSKS

Z ZIPCARS

PO PARK OMAHA

H HANDICAP PARKING

M MOTORCYCLE PARKING

THIS IS A SMOKE- AND TOBACCO-FREE CAMPUS AS OF 8/22/16

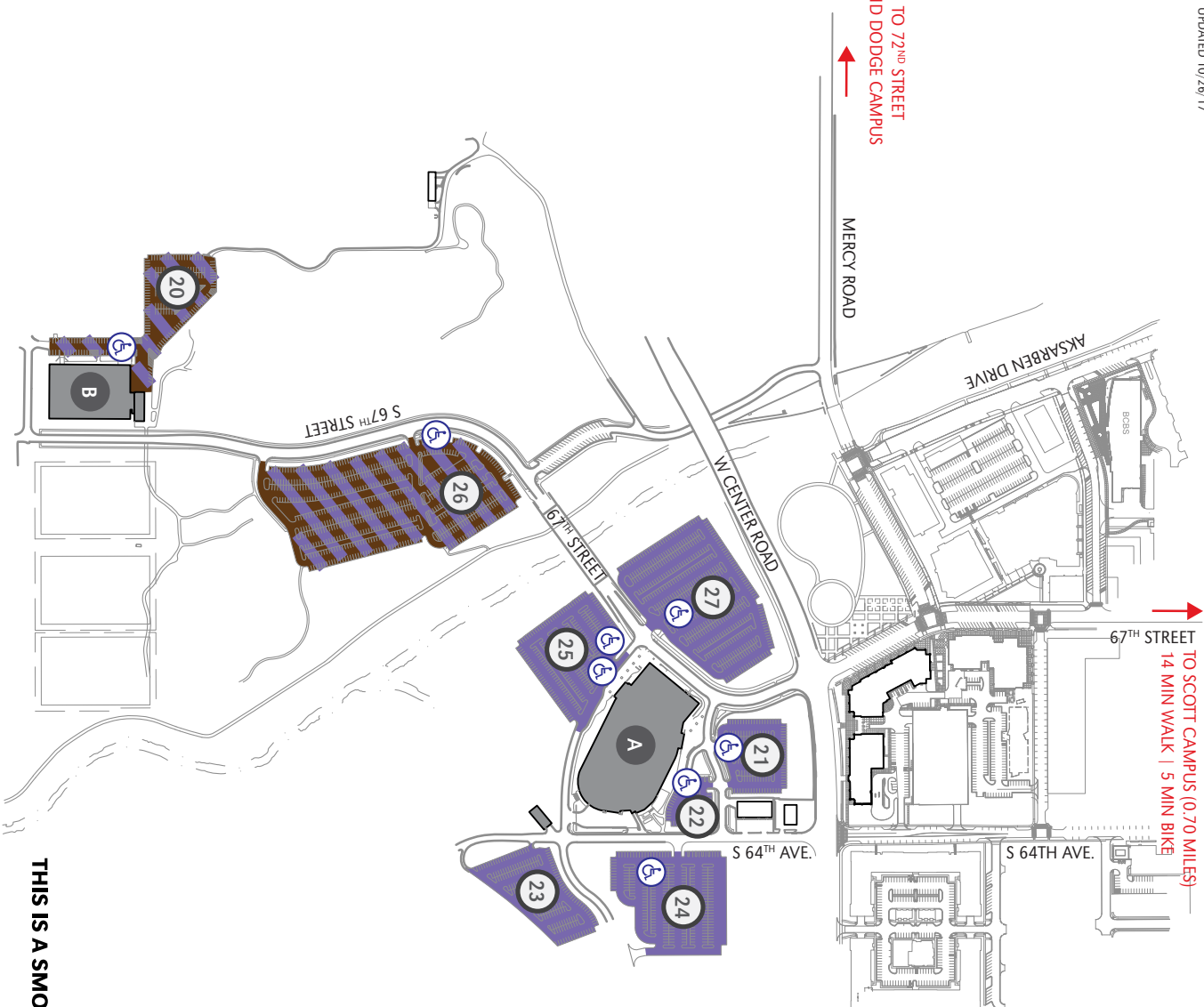


UNIVERSITY OF NEBRASKA AT OMAHA CENTER CAMPUS PARKING MAP

UPDATED 10/26/17

TO SCOTT CAMPUS (0.70 MILES)
14 MIN WALK | 5 MIN BIKE

TO 72ND STREET
AND DODGE CAMPUS



- A Baxter Arena
- B Center Dome

EVENT PARKING

NO PERMITS REQUIRED



HANDICAP PARKING

THIS IS A SMOKE- AND TOBACCO-FREE CAMPUS AS OF 8/22/16

UNIVERSITY OF
Nebraska
Omaha

402.554.2800 | unomaha.edu



UNIVERSITY OF NEBRASKA AT OMAHA
SCHOOL OF MUSIC

THE TENTH ANNUAL BOCH FESTIVAL

Band, Orchestra, and Choir Honors Festival at the Holland Performing Arts Center
Friday, January 26th | Saturday, January 27th | Sunday, January 28th
Website | <http://music.unomaha.edu/boch>

SHIRT PRE-ORDER FORM (in lieu of online purchase)

*Please print neatly. Deadline for pre-orders is January 5, 2018.
The UNO School of Music prefers that all shirt pre-orders are submitted through the BOCH Festival website.*

First Name: _____ **Last Name:** _____

Mailing Address: _____ **Apartment/Suite:** _____

City: _____ **State** _____ **Zip:** _____

*Please note that t-shirts will cost \$15 each and will contain each student's name printed on the reverse.
Complete the form below and include a check/money order for the total amount. Please do not mail cash.
Make checks payable to UNO Music.*

**Please mail completed forms and payment to the UNO School of Music using the following address:
Dr. Joshua Kearney, UNO School of Music, 6001 Dodge Street, Omaha, NE, 68182.**

Size	Quantity	
Youth Large	_____	x \$15.00/shirt = _____
Adult Small	_____	x \$15.00/shirt = _____
Adult Medium	_____	x \$15.00/shirt = _____
Adult Large	_____	x \$15.00/shirt = _____
Adult XL	_____	x \$15.00/shirt = _____
Adult XXL	_____	x \$15.00/shirt = _____
Adult XXXL	_____	x \$15.00/shirt = _____
		Total = _____

*Pre-ordered shirts will be available for pick-up at the registration table in the School of Music Lobby on Friday, Jan. 26.
A limited number of shirts will be available for purchase during festival registration and at the
Holland Performing Arts Center immediately before and after the final concert.*

BOCH CONCERT DAY INSTRUCTIONS

VENUE INFORMATION:

- The Holland Performing Arts Center (HPAC) is located at 13th and Douglas streets in downtown Omaha.
- The physical address is: 1200 Douglas Street
Omaha, NE 68102
402.345.0202

DIRECTIONS AND PARKING:

- From *downtown*: Take Douglas Street to 13th Street. The Holland Center is located on the northeast corner of 13th & Douglas streets.
- From *interstate*: Take I-80 to I-480. Take the Harney/Dodge Street exit off I-480. Turn onto Douglas Street and travel east. The Holland Center is located on the northeast corner of 13th & Douglas streets.
- Metered street parking is free on Sundays. Cost for garages and parking lots ranges from approximately \$8 to \$10.

ENTRANCE AND DESIGNATED ROOMS:

- **Performers** enter the HPAC through the Stage Door located on Dodge Street on the north side of the facility.
- **Parents and Audience Members** enter through lobby entrances on the Douglas Street side of HPAC.
- Outside food and drink are not permitted inside the HPAC.
- Once inside the Stage Door, please check in with the Security Guard and follow the signage to your designated room where you will receive further instructions.

ROOM ASSIGNMENTS FOR STUDENTS TO REPORT UPON ARRIVING AT THE HOLLAND CENTER

- String Orchestra – TBD
- Concert Band – TBD
- Wind Ensemble – TBD
- Choir – TBD

IMPORTANT CONTACTS FOR SUNDAY, JANUARY 28, 2018:

- Ticket Omaha 402.345.0606
- Holland Center Security Office 402.661.8555

ACCESSIBILITY:

Requests for accommodations should be made when purchasing tickets. Please call 402.345.0606 or toll free at 866.434.8587. Omaha Performing Arts is committed to keeping its performances and facilities accessible to everyone according to criteria established by the Americans with Disabilities Act (ADA).